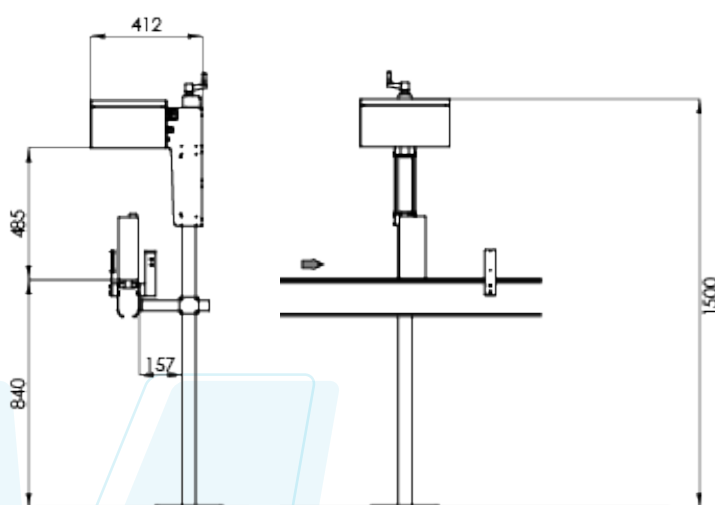
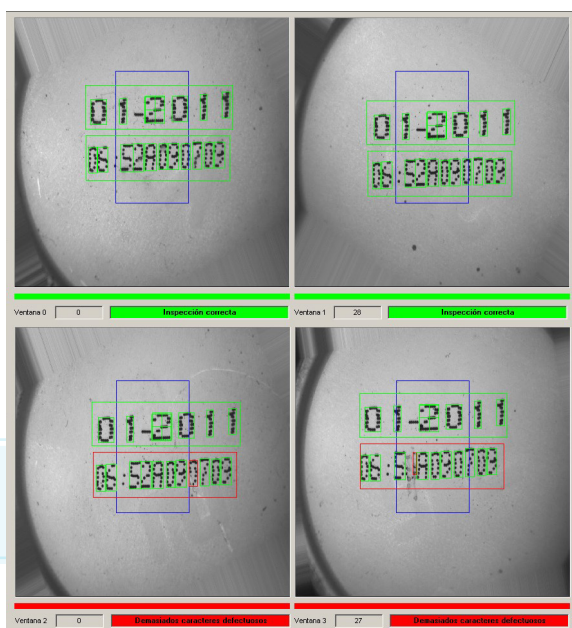


# VERIFITEXT

Inspection of codes marked on boxes and other containers.



- ✓ In-line inspection of 100% of the production.
- ✓ Not destructive.
- ✓ No physical manipulation.
- ✓ Failure rate near 0.
- ✓ Intuitive use interface.
- ✓ Simple input of parameters.
- ✓ Adjustable inspection accuracy.
- ✓ Simple operator training.
- ✓ Quick and easy format change.
- ✓ Remote technical assistance (Ethernet or modem), online analysis and remote diagnosis from E2M.
- ✓ Real-time production statistics.
- ✓ Rejection signal management. E2M offers a wide range of defective container rejection systems.



ORIENTING | INSPECTING | REJECTING

ANY KIND OF EMPTY OR FULL BOTTLES AND CONTAINERS

# VERIFITEXT

Inspection of codes marked on boxes and other containers.



## VELOCITY

72.000 BOTTLES/HOUR



## GAP

$< \frac{1}{2} \cdot \emptyset$

## GENERAL CHARACTERISTICS

- Turnkey solution installed on the existing conveyor for the inspection of marked containers.
- Maximum production capacity 800 u / min (48,000 u / h).
- High speed conveyor: 3m / s.
- 1 CMOS 1,3 Mp B / W camera.
- Lighting system with adjustable high efficiency LEDs.
- USB, Ethernet.
- Latest generation INTEL processor.
- Windows 10 based computer system and interface.
- 17" TFT touch screen for communication with the operator.

## STRATEGY:

- Vision machine: photo of the marked surfaces.

## INSPECTION:

- 100% of the units produced, without physical manipulation.

## TYPES OF MARKING:

- Printing with inkjet, pad printing, thermal transfer, punching, laser.
- Inspection of all types of codes, texts, lots, dates, etc.
- Verification of marking: EAN, Data Matrix, etc.

## DESCRIPTION

### VERIFICATOR - OCR / OCV / BARCODE / DATA MATRIX - TEXT RECOGNITION

Inspection of codes marked on boxes and other containers. Machine vision system for in-line inspection of 100% of the production.

When the container reaches the inspection area, the system takes a high-resolution photo of the marked surface. Defective units are detected and rejected.



Inkjet printing



Pad printing



Punching



Inspection of all types of codes



**Estudis Electro-Mecànics, S.L.**

Pau Vila i Dinarés, 4-10

08192 Sant Quirze del Vallès, Barcelona, Spain

T. +34 93 720 85 40

F. +34 93 720 85 25

[www.e2m.es](http://www.e2m.es)



OUR NETWORKS



GET UPDATE!

E2m offers customized solutions to meet specific requirements of each customer.  
Technical specifications updated on the website.