

PUSH

Pneumatic impact rejection system.

- ✓ Silent system.
- ✓ Easy installation on existing conveyor.
- ✓ Compact and robust design.
- ✓ Minimum preventive maintenance
- ✓ Water jet cleaning for dripping lines of dairy or sticky content.
- ✓ Long life system and fast amortization.
- ✓ Maximum packaging weight: 8kg - 20kg (boxes).
- ✓ High accuracy.

DESCRIPTION

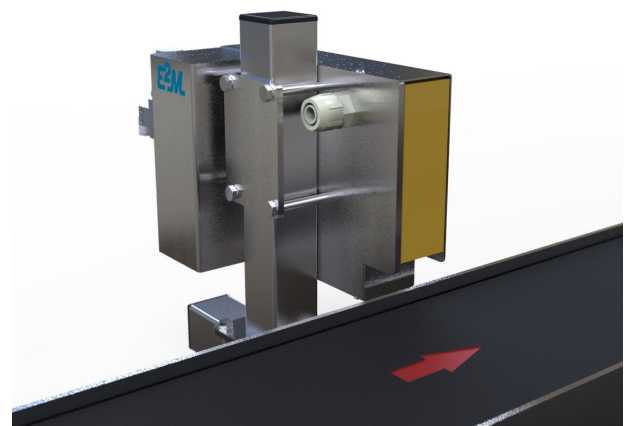
It hits the containers that moving forward on the conveyor causing their deviation towards a defective container lane, rejection table or bin, using a mechanism composed of a cylinder, an electrovalve and a shovel for the rejection.

SCOPE

It is recommended for high-speed production lines for containers that will not be reused. When the automatic inspection system detects any defective container, PUSH rejection system will reject it. It is also used in manual random inspection.

OPERATING PRINCIPLE

The rejection element is a shovel, which is always prepared to hit the container that passes by, while waiting for the following rejection order. After receiving the order, the system hits the container to another lane, rejection table or bin.



ORIENTING

INSPECTING

REJECTING

ANY KIND OF EMPTY OR FULL BOTTLES AND CONTAINERS

PUSH

Pneumatic impact rejection system.



VELOCITY

120.000 BOTTLES/HOUR



GAP

$< \frac{1}{2} \cdot \emptyset$

COMPONENTS

The components have been carefully selected to meet the requirements of high speed and minimum maintenance. The rejection system elements (solenoid valve, cylinder, pressure switch and rejection shovel) are placed inside a stainless steel enclosure that is fixed on the conveyor. Outside the enclosure there is a filter for air pressure regulation.

PROPERTIES

- It is installed on the conveyor and does not require any mechanical modifications.
- It occupies little space: reading head of 5 cm.
- It can be adjusted to different shapes and heights of containers.
- Possibility of connection via serial port to: computer, distributed control network, remote diagnosis, etc.

SECURITY

- It meets and exceeds all safety standards required in the industry.
- The electronic equipment complies with the low voltage regulations and has passed the electromagnetic compatibility tests and the quality and lifespan tests in harsh environments.
- All elements have minimum IP65 protection degree.

OPTIONS

- Cascade connection for any selection or division.
- Any additional automation.



- Adaptable to E2M or other manufacturer inspection systems.
- Option bottles, boxes, large volumes, etc.



Estudis Electro-Mecànics, S.L.

Pau Vila i Dinarés, 4-10

08192 Sant Quirze del Vallès, Barcelona, Spain

T. +34 93 720 85 40 F. +34 93 720 85 25

www.e2m.es



OUR NETWORKS



GET UPDATE!

E2m offers customized solutions to meet specific requirements of each customer.
Technical specifications updated on the website.