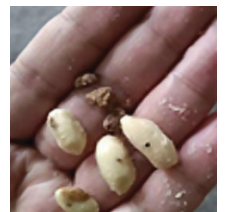


# GP BULK-FLOW X-RAY INSPECTION SYSTEMS



*Superior inspection of harvested products –  
nuts, beans, fruits, grains, etc.*



Detect sticks, shells,  
wood and other  
low-density or organic  
foreign bodies.

**GP Bulk-Flow X-Ray Inspection Systems** catch contaminants before they become costly issues. Designed for unpackaged, free-flowing products like nuts, grains, fruits, vegetables, and seafood – continuously scans product on a conveyor. Use to detect even the smallest foreign materials – including metal, glass, stone, and bone.

Whether you're processing large volumes or small specialty batches, the GP Bulk-Flow ensures your product stays safe, clean, and compliant. With advanced imaging and customizable rejection options, it takes the worry out of food safety – handling inspection with speed and precision.

## Applications

- Use to inspect free-flowing bulk products like nuts, grains, fruit, vegetables, and seafood.
- Use to improve product safety, quality, and compliance in high-speed production lines.

## Features

- **High-Speed Product Throughput**  
Designed for continuous bulk product flow, enabling efficient inspection without bottlenecks.
- **Wide Inspection Area**  
Easily handles large volumes of bulk-flow product, enabling continuous high-speed inspection.
- **High-Resolution X-Ray Imaging**  
Accurately detects even small or low-density foreign contaminants that other systems might miss, improving overall product safety.
- **Multiple System Sizes Available**  
Scales to match your production line and throughput needs.
- **Advanced A.I.-Powered Quality Inspection**  
Algorithms learn your products' specific characteristics to detect quality issues like hollow nuts, insect bites, and broken pieces.
- **Durable IP67 Stainless Steel Construction**  
Engineered for long-term durability in washdown environments, helping ensure dependable operation shift after shift.
- **Customizable Rejection Systems**  
Removes only the affected portion of product, reducing unnecessary waste while maintaining throughput and product yield.
- **Optional Integrated Vision Systems**  
Simultaneously inspect product by density, as well as color/shape.

## Key Functionality

- **Real-Time Contaminant Detection**  
Instantly identifies foreign materials to maintain product quality.
- **Auto-Learn Product Profiles**  
Adapts to new products quickly with minimal manual setup.
- **Adjustable Sensitivity Settings**  
Fine-tunes inspection levels to minimize false rejects while improving detection of even low-density contaminants.
- **Reject Confirmation Sensors**  
Verifies that each contaminated product is successfully removed, ensuring full compliance with safety standards.
- **Integrated Reporting and Traceability**  
Tracks inspection data for QA records and audits.
- **Flexible Integration Options**  
Easily fits into existing production lines with minimal disruption.



## Advanced A.I. Smart Algorithms

- **Reliable Low-Density & Organic Detection**  
Tailored AI finds hard-to-detect materials like wood, shells, plastics, stems, and pits – even when densities match. Perfect for bulk nuts, grains, and produce.
- **Self-Learning, Auto-Optimizing Performance**  
Machine learning fine-tunes settings over time, reducing recalibration and boosting accuracy.
- **Dynamic Sensitivity & Noise Filtering**  
Automatically adjusts to product flow and density, filtering interference to cut false rejects and ensure precise detection.
- **Real-Time Image Enhancement**  
AI imaging exposes subtle contaminants basic x-ray systems miss.

|                      | XR-4080GP                               | XR-6080GP |
|----------------------|---|-----------|
| X-Ray Generator:     | MAX 80kV, 350W                          |           |
| Inspection Width:    | 400mm                                   | 600mm     |
| Inspection Height:   | 50mm                                    | 100mm     |
| Conveyor Speed:      | 10-120m/min                             |           |
| Operating System:    | Windows                                 |           |
| X-Ray Emissions:     | < 1 µSv/h (CE standard)                 |           |
| IP Rating:           | IP66 (washdown for tunnel/conveyor)     |           |
| Working Environment: | Temperature: 32-104°F; Humidity: 30-90% |           |
| Reject Options:      | Integrated Precision Air-Blast          |           |
| Power Supply:        | 220V, 15A, 1PH, 1.5kVA                  |           |
| Construction:        | SUS 304                                 |           |
| Operator Interface:  | 17" Full-Color Touchscreen HMI          |           |
| Data Export:         | USB/Ethernet                            |           |

**Note:** Product models and specifications are subject to change. For more information, contact TDI Packsys.

## TDI Packsys

*TDI Packsys is a premier provider of inspection solutions and packaging automation systems. Our expert team is dedicated to delivering state-of-the-art solutions that meet your budget. Contact us to see how we can help optimize your operation.*



**SCAN ME**

## There's More

### Inspection Systems

- Metal Detectors
- Checkweighers
- Combo Systems
- X-Rays
- Color Sorters
- Vision Systems

### Packaging Automation

- Palletizers
- Form, Fill & Seal
- Scaling & Dosing
- Flow Wrappers
- Robotic Packing